

# Carrier 38 RA 100-A0029-PEE Condensing unit

## Specifications

Brand	Carrier
Type	38 RA 100-A0029-PEE Condensing unit
Product type	Air Cooled Chiller
Capacity kW	95,0
Capacity Tons	27,0
Refrigerant	Freon
Refrigerant Type	407C
Weight in kg.	1108
Sizes	2270x2060x1450 mm (LxWxH)
Compressor(s) type & model	(x1) Performer SZ185S4CC & (x1) Performer SZ 115S4CC & (x1) Performer SZ160T4CC
Number of fans	2
Remarks	Y.o.b. 2005




## Description

### Used Carrier 38 RA 100-A0029-PEE Condensing unit

Used Carrier 38 RA 100 air cooled condensing unit. Complete with 3 Performer scroll compressors: (x1) Performer SZ185S4CC & (x1) Performer SZ 115S4CC & (x1) Performer SZ160T4CC. Condenser with 2 axial fans with a total airflow of 7950 l/s. \*All components of this used chiller will be tested on adequate performance, leak free condition (condensing blocks), compressors, fans, control panel, and so forth). Choosing HOSBV means buying with warranty. We perform an industrial cleaning. \*If requested we are happy to arrange your shipment.



99PS - 525 --- 172 -- EE - A



1 - (FR) NUMERO DE SÉRIE  
(EN) SERIAL NUMBER  
(DE) SERIENNUMMER  
**12N500722**

2 - MODÈLE - MODEL  
MODELNUMMER  
**38RA-100-A0029-PEE--**  
**38RA**

3 - VARIANTE - VARIANT  
VARIANTE

4 - ANNÉE DE FABRICATION ET DATE D'ESSAI  
YEAR OF MANUFACTURING AND TEST DATE  
HERSTELLUNGSJAHR UND DATUM  
**2005/01/18**

5 - FLUIDE - MEDIUM  
KALTEMITTEL  
R **407C**

6 - GROUPE - GROUP  
GRUPPE  
**2**

7 - CHARGES CIRCUIT A  
KALTEMITTELFÜLLUNG  
KREISLAUF 1 / kg

8 - CHARGES CIRCUIT B  
KALTEMITTELFÜLLUNG  
KREISLAUF 2 / kg

9 - FLUIDE DE CONFINEMENT  
CONFINEMENT MEDIUM  
SICHERHEITSFÜLLMEDIUM  
**23**

10 - PRESSION ADMISSIBLE MIN/MAX  
ALLOWABLE PRESSURE MIN/MAX  
ZULASSIGE MIN/MAX - DRUCKE  
**0,9 32,0 bar - 0,9 25,0 bar**

11 - TEMPERATURES ADMISSIBLE MIN/MAX  
ALLOWABLE TEMPERATURE MIN/MAX  
ZULASSIGE MIN/MAX - TEMPERATUREN  
**(TS) - 20 72 °C - 20 62 °C**

12 - PRESSION DE DÉCLANCHÉMENT DES PRESSOSTATS  
PRESSURE SWITCH SETTING  
DRÜCKSCHALTER-SOLLDRUCK  
**29,0 bar / bar**

13 - PRESSION DE DÉCLANCHÉMENT DES SOUPAPES  
SAFETY RELIEF VALVE SETTING  
SICHERHEITSENTWÄRTL - SOLLDRUCK  
**/ bar / bar**

14 - PRESSION D'ESSAI D'ÉTANCHÉITÉ DE L'UNITÉ  
UNIT LEAK TEST PRESSURE  
LECKTEST-DRUCK DES GERÄTS  
**15,0 bar**

15 - TENSION  
VOLTAGE  
SPANNUNG  
**400 V 10 10 % 16 - PHASES 3**

17 - FRÉQUENCE  
FREQUENCY  
FREQUENZ  
**50 Hz**

18 - I MAXIMALE  
MAXIMUM AMPS  
MAXIMALSTROM  
**80,1 / A**

19 - PUISSANCE ABSORBÉE MAX  
MAX POWER INPUT  
LEISTUNGSAUFNAHME  
**47,0 / kW**

20 - POIDS NET  
NET WEIGHT  
NETTOGEWICHT  
**1108 kg**

24 - PRESSION DE DÉCLANCHÉMENT DES DISQUES DE RUPTURE  
RUPTURE DISKS SETTING  
ERSTELLDRUCK DER REISSScheiben


**CE0062**

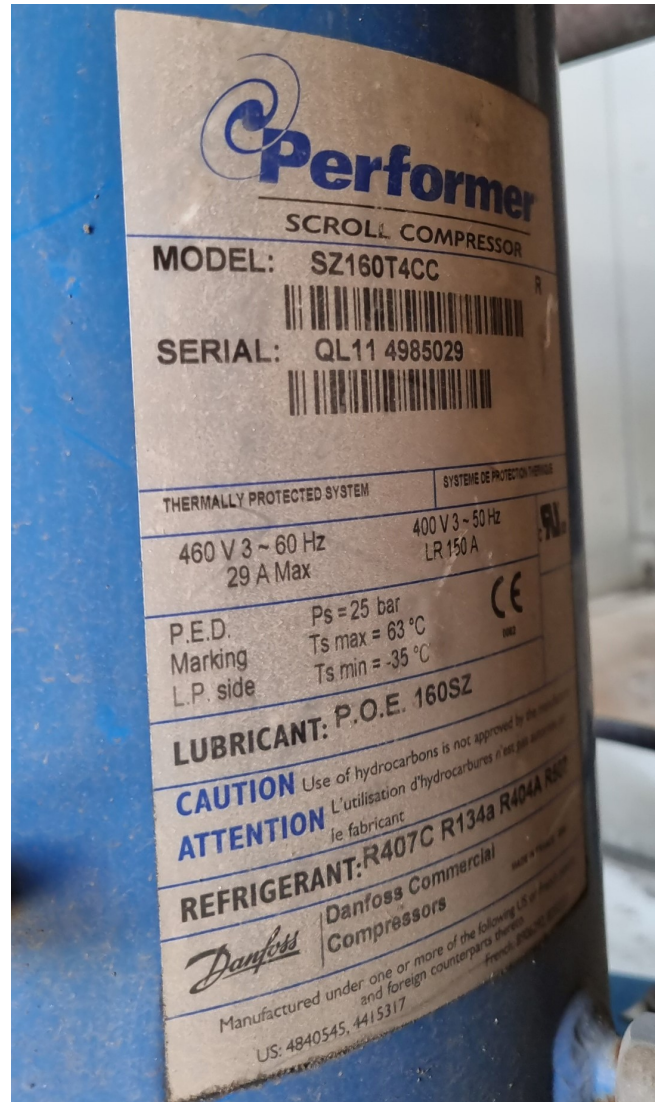
**--AZOTE--NITROGENE--**

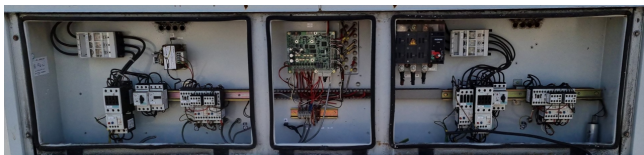
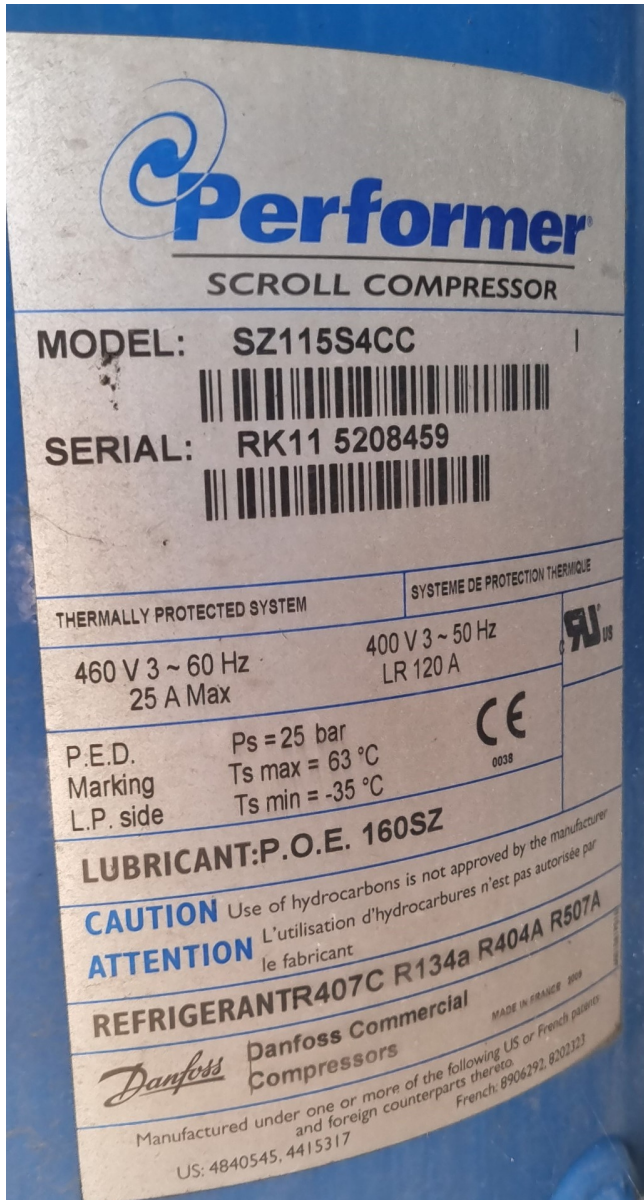
21 - HAUTE PRESSION  
HIGH PRESSURE  
HOCHDRUCKSEITE

22 - BASSE PRESSION  
LOW PRESSURE  
NIEDERDRUCKSEITE

**MANUFACTURED IN FRANCE BY  
CARRIER s.a.s - 01120 - MONTLUEL - FRANCE  
A SUBSIDIARY OF CARRIER CORPORATION  
SYRACUSE NEW YORK UNITED STATES OF AMERICA**







Your partner for used commercial and industrial refrigeration equipment

---